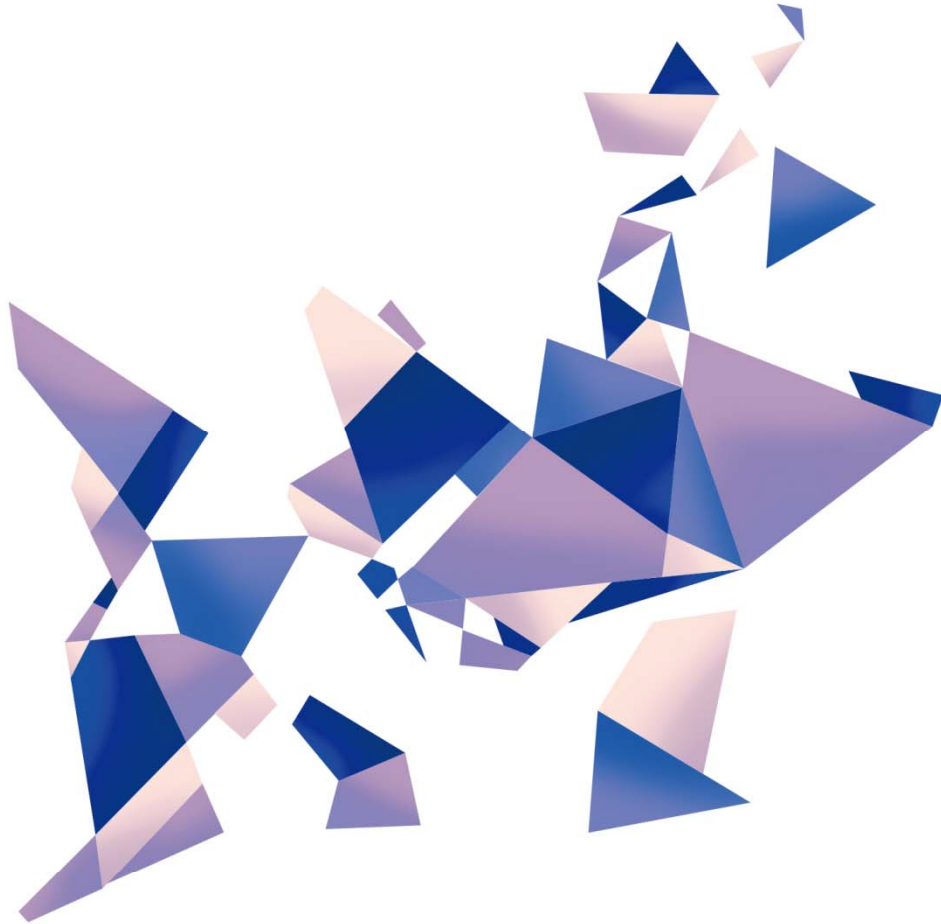


KP2H

Pandora series

Version: v1.0

Release Date: October 2021



Specifications



TEL 400 159 0808
Web: www.kystar.com.cn

Beijing KYSTAR Technology Co., Ltd.

Professional Ultra HD Video Display
Control system integrated solution and service provider

Version record

| version number | Change details | release time |
|----------------|----------------|--------------|
| V1.0 | first release | 2021.10.25 |
| | | |
| | | |
| | | |

Pandora KP2H Product Specification

Overview

KYSTAR Pandora KP2H is a multimedia player that integrates sending card and playback terminal. Compared with the traditional synchronous playback solution, it can reduce the need for computer playback terminal and is easy to control at any time. It is small in size, powerful in performance, powerful in functions, and more. Large load capacity;

Advertisements on mirror screens, light pole screens, full-color door screens, etc.

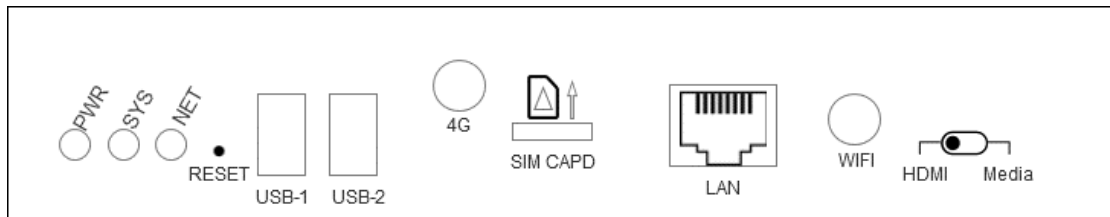


Features

- Gigabit Ethernet port*4, 2 main and 2 backups, single Ethernet port 65W points, Whole machine load 1.3 million pixels, the maximum width is 3840 pixels, the maximum is 2000 pixels;
- WIFI, Ethernet port, U disk multiple communication methods
- Built-in 8GB (5G available for users), support U disk expansion
- 3.5mm audio output, audio and video synchronous output
- Support HDMI input and output, full-screen adaptive playback
- Support multiple windows and multiple materials to play on the screen at the same time
- Onboard brightness sensor interface, automatically adjust the screen brightness according to the ambient brightness
- Kystar PE program editing, drag and drop operation, do what you want
- Concise APP for full control of screen adjustment, editing and management,

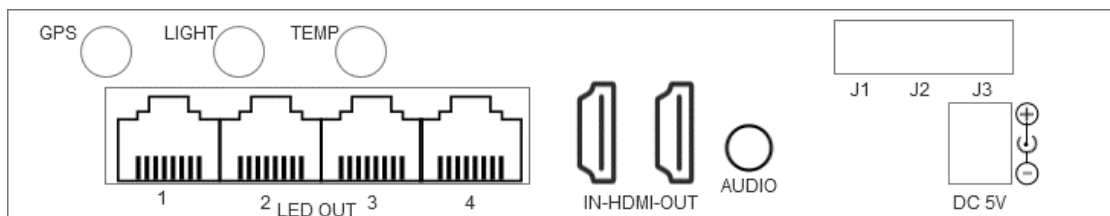
Panel description

Front panel



| Name | Function Description |
|-------------|--|
| SYS | Running status indicator The system and app start normally, sys is always on; When the player app is abnormal, sys flashes, once per second System upgrade process, sys flashes quickly, 4 times per second |
| NET | Connect status indicator The NET light is always on when Pandora is connected, otherwise it will not be on; When connect to cloud platform, NET flashes, once per second; Upload program, NET flashes quickly, 4 times per second |
| PWR | Power indicator, long light indicates normal power supply |
| RESET | Restore factory settings, always press for 5 seconds to factory |
| USB | USB2.0 *2 , Update program via U disk |
| 4G | 4G Wifi Antenna interface |
| SIM | 4G card slot, supports 4G cards of the three major operators |
| LAN | 100M input network port, access to LAN, can be directly connected to PC |
| WIFI | Wifi Antenna interface |
| HDMI--Media | Dual mode switch button HDMI : Sync mode Media : Async mode |

Back panel



| Name | Function Description |
|--------|--|
| GPS | GPS antenna interface, used for scenarios requiring positioning and precise timing |
| LIGHT | Brightness sensor interface |
| TEMP | Temperature and humidity sensor interface |
| LAN1-4 | Four gigabit output network ports, connected to Kystar all receiving cards |
| AUDIO | 3.5mm Audio output port |

| | |
|----------|--|
| HDMI | IN: HDMI 1.3 input interface, external signal OUT: HDMI 1.3 output interface, loop out signal |
| J1-J2-J3 | Relay interface, can control external power switch |
| 5V DC | Provide 5V/4A power supply |

Specifications

| External interface type | |
|-------------------------------|---|
| Gigabit output network port*4 | 2 main and 2 backup, output signal to receiving card |
| Audio output port*1 | 1/8" (3.5mm)TRS |
| USB2.0*2 | Storage expansion (U disk or SD card, maximum 128G) |
| 100M input network port*1 | Access to local area network, cluster control |
| WIFI | WiFi STA+AP Dual mode, can be connected to the router, can be used as a hotspot for mobile phone, computer connection |
| HDMI | HDMI input and output |
| LIGHT | External brightness sensor to control the screen brightness according to the ambient brightness |
| TEMP | External temperature and humidity sensor to obtain ambient temperature and humidity |
| Relay | Used to control external power switch |
| 4G (Optional) | Access to WAN |
| GPS (Optional) | Precise positioning, precise timing, multi-screen synchronization |
| DC Power input | DC 5V/4A Power input |

| Performance parameter | |
|-----------------------|--|
| Hardware performance | 1.6GH, quad-core CPU, 3D GPU 1GB@600MHz DDR3 high-speed memory Support 1080p@60fps hard decoding playback Support 1080p@30fps hardware encoding |
| Storage | Built-in 8GB storage (5G available to users) |
| Load | Single Lan port load 650,000 pixels, whole machine load 1.3 million pixels , the widest is 3840, the highest is 2000 |
| Wifi connect distance | 20m (Unobstructed) |

| Support multimedia format | |
|---------------------------|---|
| Video format | AVI, WMV, MPG, RM/RMVB, VOB, MP4, FLV and other common video formats; Supports same time playback of multiple videos |
| Audio format | MPEG-1 Layer III , AAC etc. |
| Image Format | Support bmp、 jpg、 png etc. |
| Text form | Single line text, static text, multi-line scrolling text, office, etc. |
| Clock | Real-time clock, multi-regional clock display and management. |
| OSD | Support 32bit true color OSD, can be displayed in any position, support video/graphics |

| | |
|--|--|
| | mixing, can superimpose graphics on the video. |
|--|--|

| Whole machine specification | |
|--|------------------------------|
| Dimensions | 247.2x138.5x51.1mm (L×W×H) |
| Support receiving card | KYSTAR all receiving card |
| Number of loaded receiving cards (single network port) | 200 (single lan port) |
| Input adapter power | DC 5V/4A Power supply |
| Rated power | 18W |
| Operating temperature | -20°C -70°C |
| Working humidity(%) | 5%-95% |

Attachment: equipment size chart

